



**70%**

AFRICA'S POPULATION  
GREW BY 70% BETWEEN  
2000 AND 2019



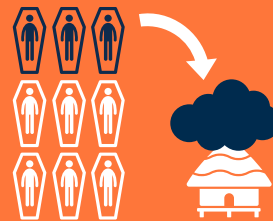
**3 BILLION**

AFRICA'S POPULATION  
IS EXPECTED TO REACH  
3 BILLION BY 2050



**100 MILLION**

BY 2040 THERE WILL LIKELY  
BE OVER 100 MILLION MORE  
HOUSEHOLDS IN SUB-SAHARAN  
AFRICA THAN IN 2020



**30%**

IN 2019, 30% OF ALL DEATHS  
GLOBALLY FROM HOUSEHOLD AIR  
POLLUTION OCCURRED IN AFRICA

### THE IMPACT OF A COOKING USING WOOD AND OTHER BIOMASS

THE COMBINATION OF POPULATION GROWTH AND LACK OF ACCESS  
TO CLEAN COOKING IS HAVING A **SEVERE IMPACT ON SEVERAL LEVELS**



**HEALTH IMPACT**  
CAUSED BY INDOOR  
AIR POLLUTION



**BLACK CARBON  
EMISSIONS**

**CO<sub>2</sub>E AND BLACK CARBON  
EMISSIONS** LINKED TO  
BURNING SOLID AND LIQUID  
FUELS



**CONTINUED GENDER  
INEQUALITY** DUE TO  
LOST TIME COLLECTING  
FUEL AND COOKING WITH  
INEFFICIENT FUELS



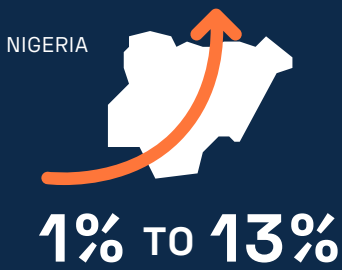
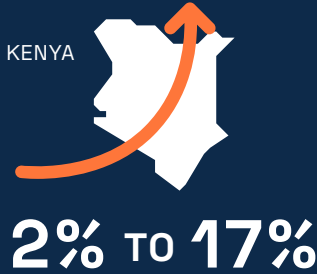
**DEFORESTATION**  
LINKED TO FIREWOOD  
COLLECTION OR  
CHARCOAL PRODUCTION



IN GHANA AND ETHIOPIA FOR EXAMPLE, **THE ANNUAL ECONOMIC IMPACT OF INDOOR AIR POLLUTION** HAS BEEN ESTIMATED TO BE \$1.6 BILLION AND \$3.0 BILLION, RESPECTIVELY, OR APPROXIMATELY **1% OF THE COUNTRIES' TOTAL GDP**

**SLOW PROGRESS  
BUT GREAT POTENTIAL**

SUB-SAHARAN AFRICA HAS SEEN RELATIVELY **SLOW PROGRESS** IN INCREASING USE OF CLEAN COOKING WITH ONLY 17% OF THE POPULATION HAVING ACCESS IN 2020. HOWEVER, **SEVERAL COUNTRIES HAVE SEEN A CONSIDERABLE GROWTH RATE IN LPG UPTAKE FOR COOKING**



**THE POTENTIAL IMPACT OF A SWITCH TO CLEAN COOKING**



**IMPACT IF 50%**  
OF THE POPULATION WERE TO SWITCH



**IMPACT IF 100%**  
OF THE POPULATION WERE TO SWITCH



**CASE STUDY: KENYA**



**+63%**  
63% INCREASE IN THE  
POPULATION EXPECTED  
BETWEEN 2022 AND 2050



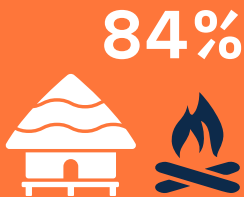
A SIGNIFICANT PROPORTION OF HOUSEHOLDS STILL RELY ON FIREWOOD AND CHARCOAL, OF WHICH AN IMPORTANT PROPORTION IS HARVESTED UNSUSTAINABLY



**12,000 HECTARES**  
WITH KENYA LOOSING 12,000 HECTARES OF FOREST EACH YEAR, **DEFORESTATION IS ONE OF THE LEADING CONTRIBUTORS TO CLIMATE CHANGE**



**REDUCING LEVELS OF DEFORESTATION PRESERVES AN IMPORTANT CARBON SINK HELPING SIGNIFICANTLY TO REDUCE LEVELS OF CARBON DIOXIDE**



**84%**  
A STUDY IN RURAL KENYA, IN 2016, FOUND THAT AROUND **84% OF HOUSEHOLDS STILL DEPEND ON FIREWOOD AS THEIR PRIMARY COOKING FUEL**, WITH 49% OF THESE HOUSEHOLDS COLLECTING FIREWOOD FOR FREE



**350 MILLION**  
A SWITCH TO LPG COULD **SAVE UP TO 350 MILLION TREES BY 2030**

